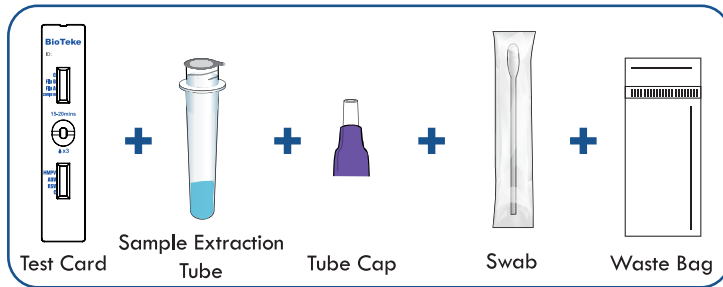


SARS-CoV-2/Flu A/Flu B/RSV/ADV/HMPV Antigen Rapid Test Kit

(Immunochromatographic Assay)

1. Read this instruction guide carefully.
2. Have ready a watch (or a clock/timer), tissues and either hand sanitizer or soap and warm water.
3. Check the test kit contents to make sure that nothing is damaged or broken.

- For Professional Use
- For anterior nasal swabs or oropharyngeal swabs.
- Please read the instructions carefully before you begin testing.



Note: Test cards kept at low temperature should be restored to room temperature before opening to avoid moisture absorption.

Note: Materials required but not provided.

- (1) Watch (or a clock/timer),
- (2) Tissues,
- (3) Hand sanitizer / soap.

1

Wash your hands thoroughly for at least 20 seconds before the test.



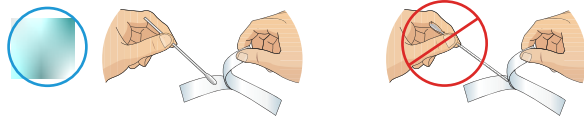
2

Put the tube into the kit box holder and gently peel off the aluminum foil seal.

3

Either of the anterior nasal swab collection and the oropharyngeal swab collection can be chosen. Once the collection is complete, the later test steps are the same.

Remove the swab from its wrapper and take out the swab by holding the handle. Do not touch the fabric tip of the swab with your hands.

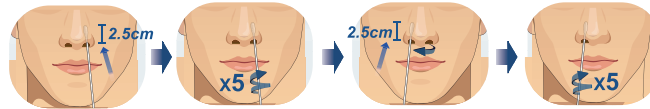


4

Anterior nasal swab collection:

NOTE: Please blow your nose before swabbing for specimen collection.

Gently insert the swab for less than one inch (about 2.5cm) into one nostril. Slowly rub the swab against all of the inside of your nose. Make at least 5 big circles. Do not just spin the swab. Repeat this step in your other nostril using the same swab.



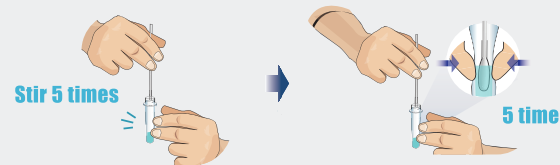
NOTE: With children, the maximum depth of insertion into the nostril may be less than 3/4 inch, please adjust according to age.

Oropharyngeal swabs collection:

Oropharyngeal swab collection: Insert the swab into the mouth completely into the pharynx, centering on the red swelling of the pharynx wall and upper anterior tonsils. Wipe both sides of pharyngeal tonsils and pharynx posterior wall with moderate force, avoid touching the tongue, and remove the swab.

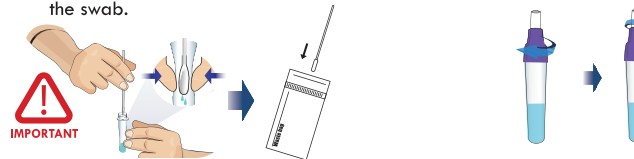


5 Insert the swab into the sample tube. Touch the bottom of the sample tube with the swab tip, and stir at least 5 times. Squeeze the swab in the tube through the outer wall of the tube by fingers 5 times.



6 Remove the swab by rotating against the sides of the tube to release the liquid from the swab. Remove and discard the swab.

7 Screw the purple tube cap onto the sample tube and then unscrew the top white cap.



8 Open the pouch and take out the Test Card. Place it on a flat, dry and clean surface. Turn the tube integrated dropper cap upside down and vertically at 90 degrees, gently squeeze to slowly and evenly drip 3 or 4 drops of liquid from the dropper into the sample hole of the detection card.

(Note: Improper operation may cause too much or too little liquid to drip into the sample hole, which can affect the detection results.)



9 Results Interpretation

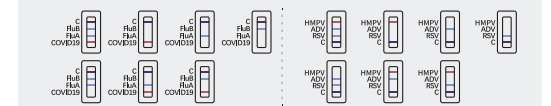
NOTE: **IMPORTANT**
The test results should not be read after 30 minutes.

(Positive)

SARS-CoV-2 (COVID-19) positive: Two colored lines appear in the COVID-19/Flu A/Flu B test window. A dark blue/purple line is in the (C) section and a red line is in the (COVID-19) section.
Influenza A (Flu A) positive: Two colored lines appear in the COVID-19/Flu A/Flu B test window. A dark blue/purple line is in the (C) section and a blue line is in the (Flu A) Section.
Influenza B (Flu B) positive: Two colored lines appear in the COVID-19/Flu A/Flu B test window. A dark blue/purple line is in the (C) section and a blue line is in the (Flu B) Section.
Respiratory Syncytial virus (RSV) positive: Two colored lines appear in the RSV/ADV/HMPV test window. A dark blue/purple line is in the (C) section and a blue line is in the (RSV) section.
Adenovirus (ADV) positive: Two colored lines appear in the RSV/ADV/HMPV test window. A dark blue/purple line is in the (C) section and a red line is in the (ADV) section.
Human metapneumovirus (HMPV) positive: Two colored lines appear in the ADV/RSV/HMPV test window. A dark blue/purple line is in the (C) section and a red line is in the (HMPV) section.
Multiple positive: Two colored (C) lines appear in two separate windows. If the other line appears, the corresponding pathogen is positive.

Note: A positive result means that you are likely to be infected with SARS-CoV-2/Influenza A virus/Influenza B virus/Respiratory syncytial virus/Adenovirus/Human metapneumovirus.

Note: Test results should always be interpreted in the context of clinical observations and epidemiological data when making final diagnoses and patient management decisions.

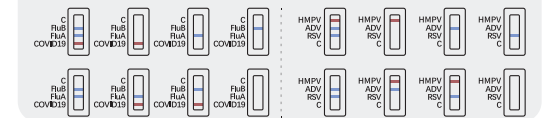


(Negative)

In the SARS-CoV-2/Influenza A virus/Influenza B virus and Respiratory syncytial virus/Adenovirus/Human metapneumovirus detection window, two dark blue/purple lines appear in the (C) section and no line appears in the detection area (COVID-19/Flu A/Flu B/RSV/ADV/HMPV). It indicates that SARS-CoV-2, Influenza A virus, Influenza B virus, Respiratory syncytial virus, Adenovirus or Human metapneumovirus were not detected in the sample. However, a negative result does not safely exclude the absence of SARS-CoV-2, Influenza A virus, Influenza B virus, Respiratory syncytial virus, Adenovirus or Human metapneumovirus infection and should not be used as the sole basis for treatment or patient management decisions. Negative results should be considered in the context of the individual's recent exposure history, medical history and the presence of clinical signs and symptoms consistent with SARS-CoV-2, Influenza A virus, Influenza B virus, Respiratory syncytial virus, Adenovirus and Human metapneumovirus, and confirmed by PCR test if necessary for patient management.

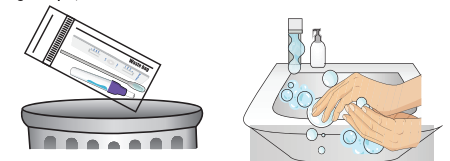
(Invalid)

If any of the control (C) lines do not appear, the test must be interpreted as invalid. An invalid test result means that your test has encountered an error and the results cannot be interpreted. You will need to retest using a new test card.



10

All used test components should be disposed of in your household waste. After completing all sampling and testing steps, wash hands or use hand sanitizer.



图纸名称	说明书-英文	文件号	RD2508-040401-101-A1	材质	双胶纸
尺寸	A4	色号	见图纸		
设计/日期		审核/日期		批准/日期	